

## WARNINGS

1

To avoid spills and overflow, keep the machine vertical after installation. Machine efficiency can be affected if the circuit board is contaminated.

2

Do NOT modify, disassemble, or repair the machine arbitrarily. If any failure occurs, please contact the relevant machine technician in time.

3

Do NOT use a quick-charger to charge the machine.

4

Do NOT use or store the machine above 70°C.



SCAN FOR ALL RESOURCES  
OR VISIT [THEMAGICSCENT.COM/RESOURCES](https://themagicscents.com/resources)

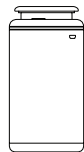
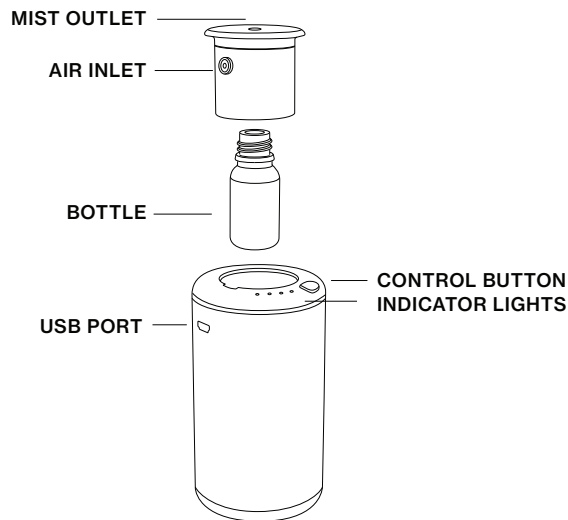
THE MAGIC SCENT™

AROMA SYSTEM  
TMS F1

**CAR & ROOM  
SCENT DIFFUSER**

[THEMAGICSCENT.COM](https://themagicscents.com)

## WHAT'S IN THE BOX



MACHINE



BOTTLE



MICRO USB



MANUAL

## REPLACING THE FRAGRANCE BOTTLE



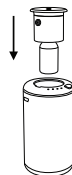
1

Remove the top from the base.



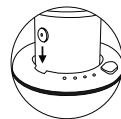
2

Unscrew the fragrance bottle and replace.



3

Re-insert the top with air inlet towards the gap.



## STATUS LIGHTS

### CHARGING

● ○ ○ ○ STATIC  
 ● ○ ○ ○ FLASHING  
 ○ ○ ○ ○ OFF

Out of Power  
 Charging\*  
 Done Charging

### INTENSITY

● ○ ○ ○  
 ● ● ○ ○  
 ● ● ● ○  
 ● ● ● ●

GRADE 1  
 GRADE 2  
 GRADE 3  
 GRADE 4

## INTENSITY

GRADE	WORKING (SECONDS)	STOP (SECONDS)
G1	6	360
G1	6	180
G1	10	280
G1	10	140

\*It takes about 1 hour to recharge the battery fully; one full recharge can last about 2-3 hours.