

HOW TO CLEAN

The machine needs to be cleaned in the following situations:

- 1 You're about to change from one The Magic Scent fragrance oil to another scent.
- 2 The atomization volume becomes weak.

Cleaning steps:

- 1 Pull the atomizer head out from the top of the diffuser. Unscrew the bottle from the atomizer.
- 2 Fill a bowl with water and vinegar. Soak the atomizer head and the bottle in this mixture for 5 to 10 minutes.
- 3 Air out the atomizer head and the bottle until dry.

Caution:

- 1 Please keep the machine upright. Tilting the diffuser may cause oil to spill or overflow, causing the machine to work less efficiently.
- 2 Do not modify, disassemble, or attempt to repair the machine. If any malfunction happens, please contact our technical personnel.
- 3 When the machine is first used or hasn't been used for more than 7 days, the control board will be out of power. Please wait 1 to 2 minutes upon connecting to power before use. The machine will come on automatically.



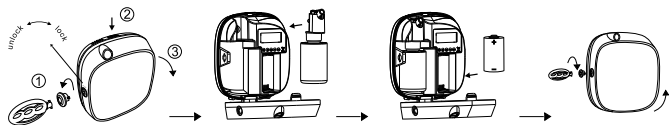
SCAN FOR ALL RESOURCES
OR VISIT [THEMAGICSCENT.COM/RESOURCES](https://themagicscent.com/resources)

THE MAGIC SCENT™

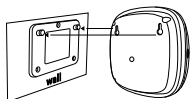
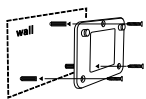
AROMA SYSTEM
TMS 60

[THEMAGICSCENT.COM](https://themagicscent.com)

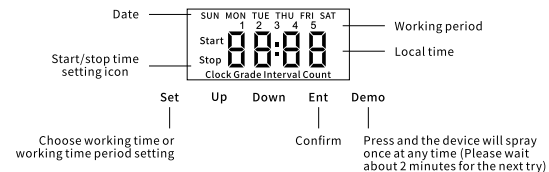
HOW TO USE



- 1 Insert key on side of machine, unlock, and withdraw the key and attachment.
- 2 Press the button on the front of the device and pull open the lid.
- 3 Withdraw the diffuser head and attached bottle. Unscrew the bottle from the diffuser head.
- 4 Fill the bottle with your favorite The Magic Scent essential aroma oil fragrance.
- ⓘ ATTENTION: Do not fill the bottle all the way.
- 5 Plug the device in using the cable or insert a D-size battery.
- 6 Screw the diffuser head back on the bottle. Place the diffuser head back on the device. Use the key to reinsert the attachment and lock the device.
- 7 Use the control panel to enter the desired operation mode level of scent intensity.
- 8 Give the diffuser two minutes to charge on its first time connected to power.
- 9 It will then begin scenting automatically.



SETTING INSTRUCTIONS



- 1 **SET LOCAL TIME**
Press 'SET' button and hold for five seconds. You will hear a beep. Then the hour value starts to flash. Press 'UP' or 'DOWN' to adjust the hour value. To confirm your chosen setting, press 'ENT' to enter it. Then set the minutes value. When you are ready to save your local time, press 'SET' to save the setting. Please note: the system needs to be set up on military time.
- 2 **SET WORKING PROGRAMS**
Press the 'SET' button twice to set the automatic start/stop working time. There are 5 different programs in total. When the numbers start flashing and the word 'START' appears on the display, you are ready to set the START hours of your system for Program 1. If you want to adjust the minutes, press 'ENT.' Adjust the start time with the 'UP' button. When you are done press 'ENT' again. Next you will set the STOP hours. Set the automatic stop time by likewise using the 'UP' button to adjust the time by hours and minutes. When you are ready to save your start/stop working times for program 1, press 'ENT' again. The machine will proceed to adjusting the scent intensity level.
- 3 **ADJUST SCENT INTENSITY LEVEL**
There are 10 different scent intensity levels. 1 is the lowest and 10 is the highest. Please see the table below for working intervals of each level. You can adjust with the 'UP' button, and when you are done press 'ENT' to save the settings; you will see 'ON' written on your display.
- 4 **FIVE PROGRAMS PER DAY**
If you need to have several different start/stop working periods, press 'SET' and program the device per the 'Working Period' numbers 1 through 5 which appear on the display. Adjust the start/stop hours by following the same steps as for program 1. Once you are done press 'ENT' again.

After one minute of entering settings on the diffuser, the device will auto lock on the settings entered.